
Carseland School

“The Small School with the Big Heart”



3-Year Education Plan and Annual Education Results Report (AERR) 2011-2014



Accountability Statement

The **Carseland School** education plan for the three years commencing September 1, **2011** was prepared under the direction of the Golden Hills School Division in accordance with responsibilities under the *School Act* and the *Government Accountability Act*. This education plan was developed in the context of the provincial government's business and fiscal plans. The school is committed to achieving the results laid out in this education plan.

Carseland School Vision

- Is to provide the best opportunities for students to excel and become lifelong learners, in a school where teachers support each other to improve student learning and teaching in a safe and caring environment.

Carseland School Mission

- Preparing Children for a Life Time of Learning

Carseland School Values

Core values as outcomes for students

- We will provide the best opportunities for students to develop their skills , talents and experience success
- We will teach and model values (Character Education)
- We will provide them the building blocks to become good citizens
- We will stimulate students to become life long learners

Core values as Commitment to each other

- We will committ to be a cohesive team that supports each other
- We will continue to develop our skills through Professional Development and Professional Learning communities
- We will respect professionalism
- We will aide in professional development of each other

Core values as beliefs about conditions for learning

- We will provide a safe, caring and health environment
- We will provide on going assessment to improve learning and teaching
- We will communicate openly with our school community
- We will support different learning styles

School Profile

Carseland School is a beautiful school located in the hamlet of Carseland. It is in the southwest corner of the Golden Hills School Division #75, within view of the Rocky Mountains and two kilometers from the Bow River. It is an elementary school with a population of approximately 100 students from kindergarten to Grade 6. Approximately 25% of our students ride the school bus to and from school while the remainder of our student population resides in Carseland

Communication

- This Document will be posted on our school website www.carselandschool.com (Which can be accessed through the Golden Hills School Division website www.ghsd75.ca)
- School council is involved in providing input to our school goals. In May our teachers review the accountability pillar and create preliminary school goals. These goals are taken to the May school council meeting for review and input. In September the goals are reviewed by both the staff and school council. In November the goals are finalized after review of the October Provincial Achievement Test results.
- The three-year plan will be communicated to parents through our school council meetings and in our parent section at the school.



October 2011 Accountability Pillar Overall Summary

Measure Category	Measure Category Evaluation	Measure	Carseland School			Alberta			Measure Evaluation		
			Current Result	Prev Year Result	Prev 3 yr Average	Current Result	Prev Year Result	Prev 3 Yr Average	Achievement	Improvement	Overall
Safe and Caring Schools	Excellent	Safe and Caring	95.3	91.9	93.8	88.1	87.6	86.6	Very High	Maintained	Excellent
Student Learning Opportunities	n/a	Program of Studies	76.9	73.0	76.6	80.9	80.5	80.1	Intermediate	Maintained	Acceptable
		Education Quality	97.2	94.1	97.4	89.4	89.2	88.9	Very High	Maintained	Excellent
		Drop Out Rate	n/a	n/a	n/a	4.2	4.3	4.7	n/a	n/a	n/a
		High School Completion Rate (3 yr)	n/a	n/a	n/a	72.6	71.5	71.1	n/a	n/a	n/a
Student Learning Achievement (Grades K-9)	Good	PAT: Acceptable	90.9	86.0	87.1	79.3	79.1	78.0	Very High	Maintained	Excellent
		PAT: Excellence	10.9	18.0	13.6	19.6	19.4	18.5	Low	Maintained	Issue
Student Learning Achievement (Grades 10-12)	n/a	Diploma: Acceptable	n/a	n/a	n/a	82.6	83.4	84.0	n/a	n/a	n/a
		Diploma: Excellence	n/a	n/a	n/a	18.7	19.0	18.9	n/a	n/a	n/a
		Diploma Exam Participation Rate (4+ Exams)	n/a	n/a	n/a	54.9	53.5	53.5	n/a	n/a	n/a
		Rutherford Scholarship Eligibility Rate (Revised)	n/a	n/a	n/a	59.6	56.9	57.0	n/a	n/a	n/a
Preparation for Lifelong Learning, World of Work, Citizenship	n/a	Transition Rate (6 yr)	n/a	n/a	n/a	59.3	59.8	59.3	n/a	n/a	n/a
		Work Preparation	87.5	85.0	95.0	80.1	79.9	79.8	Very High	Maintained	Excellent
		Citizenship	92.9	88.8	90.5	81.9	81.4	79.9	Very High	Maintained	Excellent
Parental Involvement	Excellent	Parental Involvement	90.0	88.2	96.1	79.9	80.0	79.4	Very High	Maintained	Excellent
Continuous Improvement	Excellent	School Improvement	92.3	81.8	89.2	80.1	79.9	78.8	Very High	Maintained	Excellent

Notes:

1. PAT results are a weighted average of the percent meeting standards (Acceptable, Excellence) on Provincial Achievement Tests. The weights are the number of students enrolled in each course. Courses included: English Language Arts (Grades 3, 6, 9), Science (Grades 6, 9), French Language Arts (Grades 6, 9), Français (Grades 6, 9).
2. Diploma results are a weighted average of percent meeting standards (Acceptable, Excellence) on Diploma Examinations. The weights are the number of students writing the Diploma Examination for each course. Courses included: English Language Arts 30-1, English Language Arts 30-2, French Language Arts 30-1, Français 30-1, Pure Mathematics 30, Applied Mathematics 30, Biology 30, Science 30.
3. Overall evaluations can only be calculated if both improvement and achievement evaluations are available.
4. The subsequent pages include evaluations for each performance measure. If jurisdictions desire not to present this information for each performance measure in the subsequent pages, please include a reference to this overall summary page for each performance measure.
5. Data values have been suppressed where the number of students is less than 6. Suppression is marked with an asterisk (*).

Goal One: Success for Every Student

Outcome: *Students demonstrate proficiency in literacy and numeracy*

Note – This outcome replaces the following outcome from the 2010/11 – 2012/13 three year education plan:

- *Students demonstrate high standards in learner outcomes (K-9 portion only)*

Performance Measure	Results (in percentages)					Target ¹	Evaluation			Targets ²		
	2007	2008	2009	2010	2011	2011	Achievement	Improvement	Overall	2012	2013	2014
Overall percentage of students in Grades 3, 6 and 9 who achieved the acceptable standard on Provincial Achievement Tests (overall cohort results).	86.5	95.7	79.6	86.0	90.9	93	Very High	Maintained	Excellent	93	95	95
Overall percentage of students in Grades 3, 6 and 9 who achieved the standard of excellence on Provincial Achievement Tests (overall cohort results).	27.0	10.6	12.2	18.0	10.9	17	Low	Maintained	Issue	17	20	20

Comment on Results

In the last three years we have seen an increase in the overall percentage of students achieving the acceptable standard. This is a reflection of the work our school has done in the area of student assessment. An area that needs improvement is the standard of excellence

Strategies

- Continue with Early Literacy Intervention Program
 - ◆ Continue to train parents to help with the ELI program
- Complete a Provincial Achievement Test analysis. This information is used to improve areas in every grade level. Improve on the overall excellence on provincial achievement tests.
- Support Professional Development events (teachers will go to the Alberta Assessment Consortium conference. Staff is supported to go to any PD related to assessment.
- Improving writing and reading strategies:
 - ◆ All teachers will go to Barbra Mariconda Narrative Writing Workshop.
 - ◆ Using strategies from the CRC, Pearson & AB Education Literacy pilot project in grades 4-6
 - ◆ Using the Diagnostics Reading Assessment K-2 Library leveled (Fountas & Pinnell)
 - ◆ Students using Accelerated Reader Program
- Teacher professional growth requires an assessment component
- Continue having an outcomes based report card
 - ◆ Part of the Golden Hills new report card pilot
- Improve Assessment practices through AISI project
 - ◆ Prioritized Curriculum: Keeping students and parents aware of the outcomes & targets
 - ◆ Collecting, creating, and post exemplars in Language Arts (may include other subjects)
 - ◆ Improving on Peer and Self Assessment
 - ◆ Providing quality and timely descriptive feedback
 - ◆ Creating and using rubrics
 - ◆ Monthly assessment professional development as a part of the regular staff meeting
 - ◆ AISI Lead teacher working hands on with other teachers to improve assessment
- Working on 21st century learning skills
 - ◆ Collaboration across networks
 - introduce blogging to our students
 - ◆ Critical thinking and problem solving
 - Grade level curriculum inquiry based projects

Notes:

1. Aggregated PAT results are based upon a weighted average of percent meeting standards (Acceptable, Excellence). The weights are the number of students enrolled in each course. Courses included: English Language Arts (Grades 3, 6, 9), Science (Grades 6, 9), French Language Arts (Grades 6, 9), Français (Grades 6, 9). The percentages achieving the acceptable standard include the percentages achieving the standard of excellence.
2. Data values have been suppressed where the number of students is less than 6. Suppression is marked with an asterisk (*).

Outcome: Students are prepared for the 21st century

Note – This outcome combines the following outcomes from the 2010/11 – 2012/13 three year education plan:

- Students model the characteristics of active citizenship
- Students are well prepared for employment

Performance Measure	Results (in percentages)					Target	Evaluation			Targets		
	2007	2008	2009	2010	2011	2011	Achievement	Improvement	Overall	2012	2013	2014
Percentages of teachers, parents and students who are satisfied that students model the characteristics of active citizenship.	86.7	86.2	96.5	88.8	92.9	95	Very High	Maintained	Excellent	95	95	95
Percentages of teachers and parents who agree that students are taught attitudes and behaviours that will make them successful at work when they finish school.	n/a	100.0	100.0	85.0	87.5	88	Very High	Maintained	Excellent	90	90	90

Comment on Results

Very satisfied with our result. Close to achieving our targets for this outcome.

Strategies

- Continue using our characteristics education program fostering citizenship and virtuous behaviour
- Continue Carseland student leadership group
- Promote global citizenship through the following activities: Terry Fox Run, Highway clean up, Jump rope for heart/hoops for heart, Unicef, Operation Christmas Child, Community spring clean up, food bank, Pennies for patients, & Red Cross
- Introduce digital citizenship



Note: Data values have been suppressed where the number of respondents is less than 6. Suppression is marked with an asterisk (*).

Goal Two: Transformed Education Through Collaboration

Outcome: *Students have access to programming and supports to enable their learning*

Note – This outcome combines the following outcomes from the 2010/11 – 2012/13 three year education plan:

- *The education system meets the needs of all K– 12 students and supports our society and the economy*
- *School environments are safe and caring*

Performance Measure	Results (in percentages)					Target	Evaluation			Targets		
	2007	2008	2009	2010	2011	2011	Achievement	Improvement	Overall	2012	2013	2014
Percentage of teachers, parents and students satisfied with the opportunity for students to receive a broad program of studies including fine arts, career, technology, and health and physical education.	72.9	83.6	73.2	73.0	76.9	76	Intermediate	Maintained	Acceptable	77	78	79
Percentage of teachers, parents and students satisfied with the overall quality of basic education.	80.6	97.9	100.0	94.1	97.2	95	Very High	Maintained	Excellent	95	95	95
Percentage of teacher, parent and student agreement that: students are safe at school, are learning the importance of caring for others, are learning respect for others and are treated fairly in school.	93.3	93.5	95.9	91.9	95.3	95	Very High	Maintained	Excellent	95	95	95

Comment on Results

We meet our target for this goal for 2010-2011

Strategies

- Convey a clear school vision to all school community members
- Maintain our discipline cycle: Learning Packages
- Continue our Character Education program (Monthly virtue assemblies, Daily readings about the virtue, handing out of virtue leaves, journal writings, and classroom buddy activities.)
- Principal excellence awards
- Grade 6 student leadership group (student government)
- Update crisis response manual
- Review pandemic response plan
- Crisis Shelter presentations: Paul Thomas (on self-esteem, peer pressure, bullying, etc.)
- Healthy living initiative (Continue our Klicks Program, healthy snack in canteen, fruit & veggie day)
- Drug prevention program: Grade 5 & 6
- Farm safety presentation
- Purchase of technology tools: All classrooms will have an activboard and an iPad, all school computers will be updated, and a mobile laptop cart with 30 computers, the school will have wireless access for personal devices.
- Daily fine arts and daily physical education class(Ever Active)
- Continue Enrichment Clusters(community members come into the school to teach students something unique)
- Continue, intramural program, after school volleyball team and track club

Note: Data values have been suppressed where the number of respondents is less than 6. Suppression is marked with an asterisk (*).

Outcome: *The education system demonstrates openness to new and innovative ideas, leadership and collaboration*

Note – This outcome combines the following outcomes from the 2010/11 – 2012/13 three year education plan:

- *The jurisdiction demonstrates effective working relationships*
- *The jurisdiction demonstrates leadership, innovation and continuous improvement*

Performance Measure	Results (in percentages)					Target	Evaluation			Targets		
	2007	2008	2009	2010	2011	2011	Achievement	Improvement	Overall	2012	2013	2014
Percentage of teachers and parents satisfied with parental involvement in decisions about their child's education.	86.7	100.0	100.0	88.2	90.0	95	Very High	Maintained	Excellent	95	95	95
Percentages of teachers, parents and students indicating that their school and schools in their jurisdiction have improved or stayed the same the last three years.	50.0	92.9	92.9	81.8	92.3	90	Very High	Maintained	Excellent	90	90	90

Comment on Results

The School has improved in this outcome from the previous year. We have a strong working relationship with our parents and are always striving for improvement in student learning.

Strategies

- Continue to have a strong working relationship and open communication with our school council (a large number of school community attend)
- Educating our parents about new initiatives (Assessment, activboards)
- Continue to have School council involved in the process of school goals
- School council has information section on our webpage
- Strong parental involvement in Early Literacy project
- Keeping parents aware of student outcomes
- Using our social media(webpage ,twitter, and Facebook) to inform parents
- Student lead conferences
- Having Volunteer Recognition
- Utilize the information from the accountability pillar results to make improvement
- Receive feedback from school council on implementing new ideas
- Continue with occupational health and safety committee
- Continue working with GHSD on AISI project. They provide the infrastructure and support to make this project successful

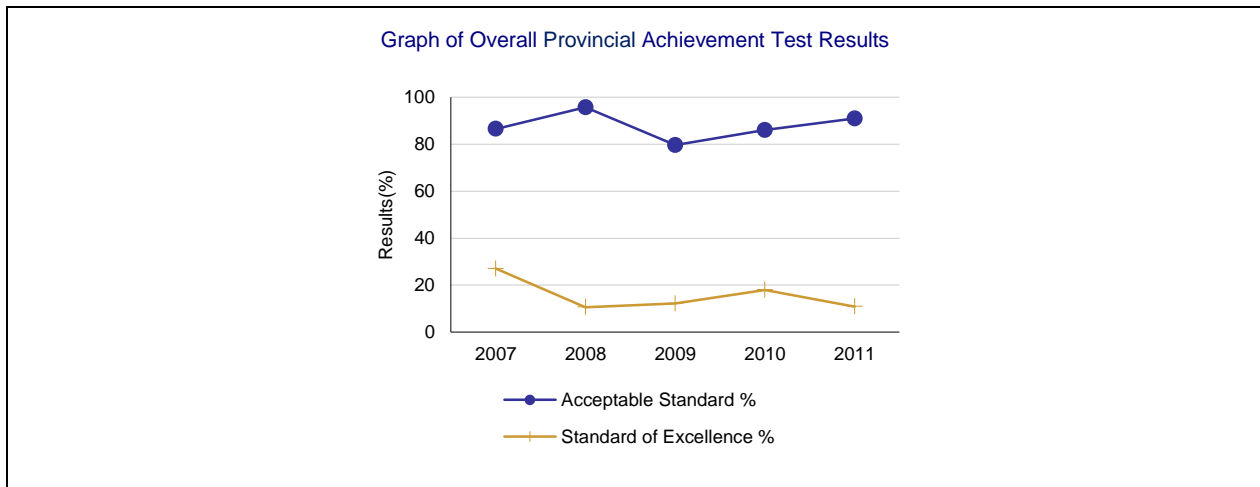


Note: Data values have been suppressed where the number of respondents is less than 6. Suppression is marked with an asterisk (*).

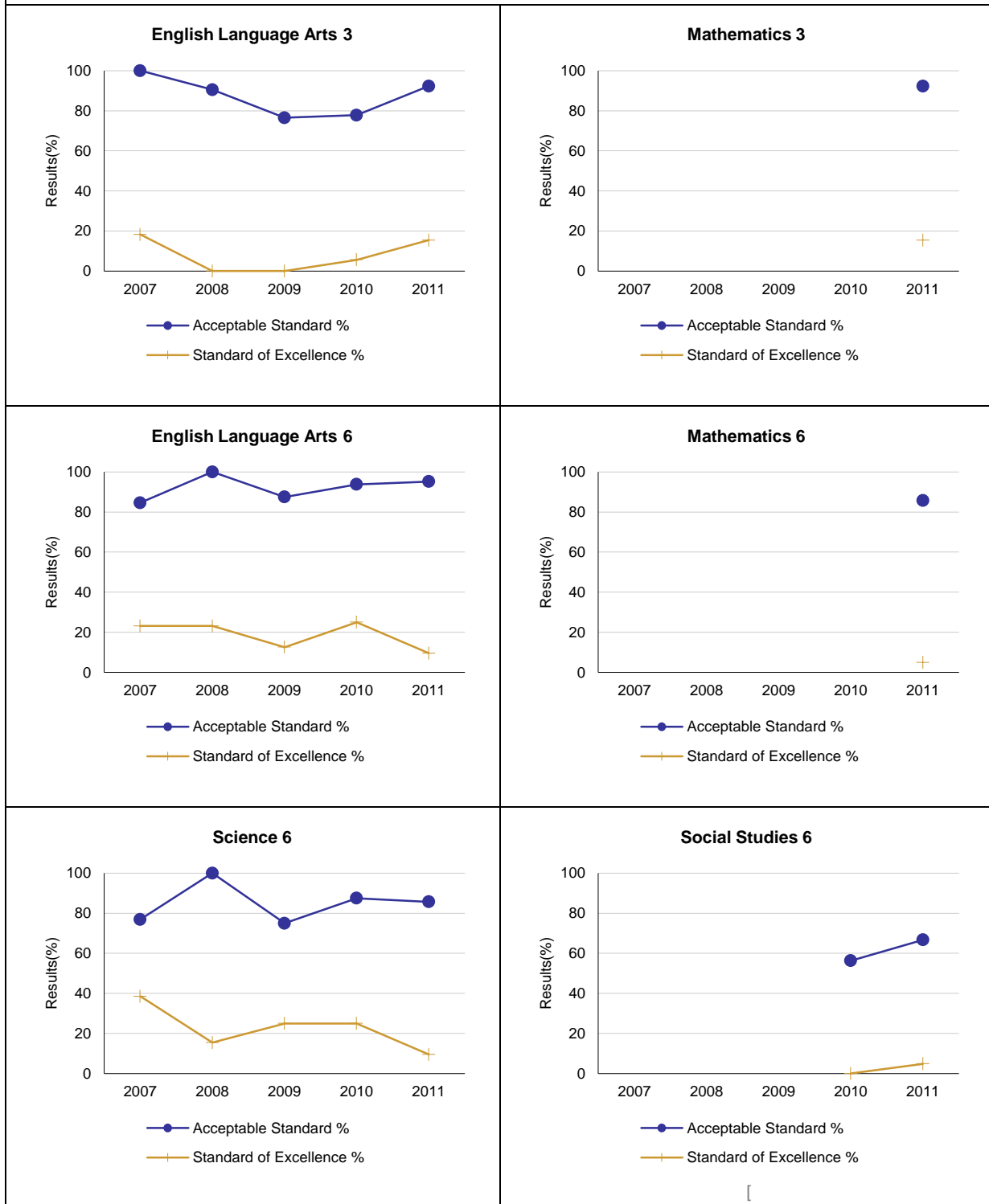
Provincial Achievement Test Results – Measure Details

AT Course by Course Results by Number Enrolled.													
		Results (in percentages)										Target	
		2007		2008		2009		2010		2011		2011	
		A	E	A	E	A	E	A	E	A	E	A	E
English Language Arts 3	School	100.0	18.2	90.5	0.0	76.5	0.0	77.8	5.6	92.3	15.4		
	Authority	82.3	18.2	87.0	14.9	84.4	18.2	83.9	16.1	87.8	15.7		
	Province	80.3	17.7	80.1	16.1	81.3	18.2	81.6	19.5	81.8	17.5		
Mathematics 3	School	n/a	n/a	n/a	n/a	n/a	n/a	n/a	n/a	92.3	15.4		
	Authority	n/a	n/a	n/a	n/a	n/a	n/a	n/a	n/a	82.7	23.2		
	Province	n/a	n/a	n/a	n/a	n/a	n/a	n/a	n/a	77.4	26.0		
English Language Arts 6	School	84.6	23.1	100.0	23.1	87.5	12.5	93.8	25.0	95.2	9.5		
	Authority	78.7	15.1	82.7	18.9	83.3	16.7	87.4	19.1	86.6	17.1		
	Province	80.3	19.8	81.1	21.0	81.8	18.9	83.3	18.9	83.0	18.5		
Mathematics 6	School	n/a	n/a	n/a	n/a	n/a	n/a	n/a	n/a	85.7	4.8		
	Authority	n/a	n/a	n/a	n/a	n/a	n/a	n/a	n/a	76.8	14.3		
	Province	n/a	n/a	n/a	n/a	n/a	n/a	n/a	n/a	73.7	17.8		
Science 6	School	76.9	38.5	100.0	15.4	75.0	25.0	87.5	25.0	85.7	9.5		
	Authority	69.1	23.7	72.4	18.7	78.6	20.0	76.4	21.6	78.1	18.6		
	Province	75.2	26.6	74.8	24.1	76.5	24.8	76.8	26.4	76.2	25.0		
Social Studies 6	School	n/a	n/a	n/a	n/a	n/a	n/a	56.3	0.0	66.7	4.8		
	Authority	n/a	n/a	n/a	n/a	n/a	n/a	65.5	10.9	67.1	12.9		
	Province	n/a	n/a	n/a	n/a	n/a	n/a	71.0	16.4	71.1	18.5		

** "A" = Acceptable; "E" = Excellence — the percentages achieving the acceptable standard include the percentages achieving the standard of excellence.



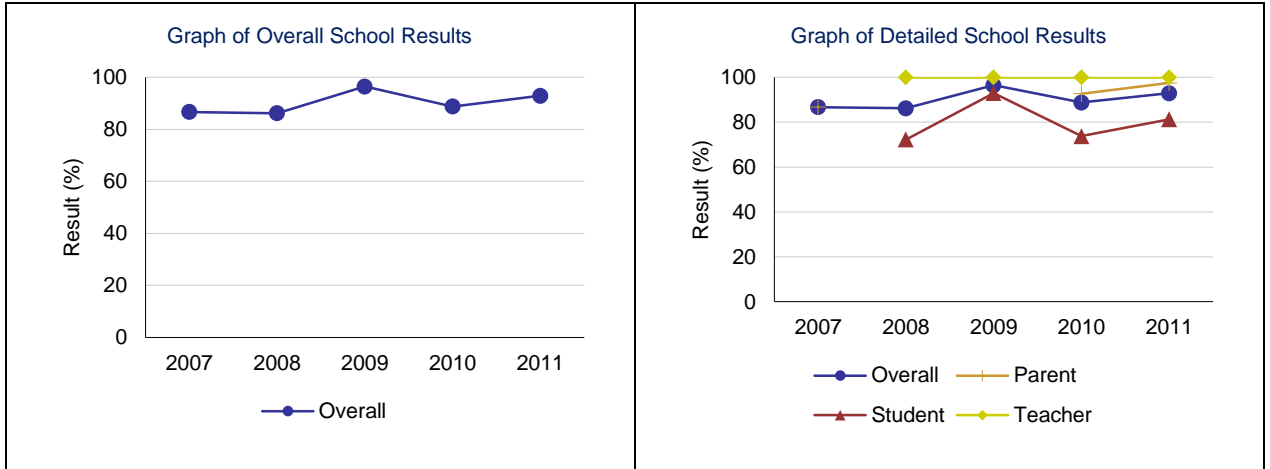
Graph of Provincial Achievement Test Results by Course



Note: Data values have been suppressed where the number of students is less than 6. Suppression is marked with an asterisk (*).

Percentages of teachers, parents and students who are satisfied that students model the characteristics of active citizenship.															
	School					Authority					Province				
	2007	2008	2009	2010	2011	2007	2008	2009	2010	2011	2007	2008	2009	2010	2011
Overall	86.7	86.2	96.5	88.8	92.9	74.0	77.2	77.7	79.4	80.7	76.6	77.9	80.3	81.4	81.9
Teacher	n/a	100.0	100.0	100.0	100.0	88.3	92.0	93.1	92.7	94.9	89.9	90.6	91.8	93.0	92.7
Parent	86.7	*	*	92.7	97.5	69.7	74.0	73.7	74.8	74.7	72.6	74.7	77.4	78.5	78.6
Student	n/a	72.3	93.0	73.8	81.3	64.0	65.6	66.3	70.7	72.5	67.1	68.5	71.8	72.7	74.5

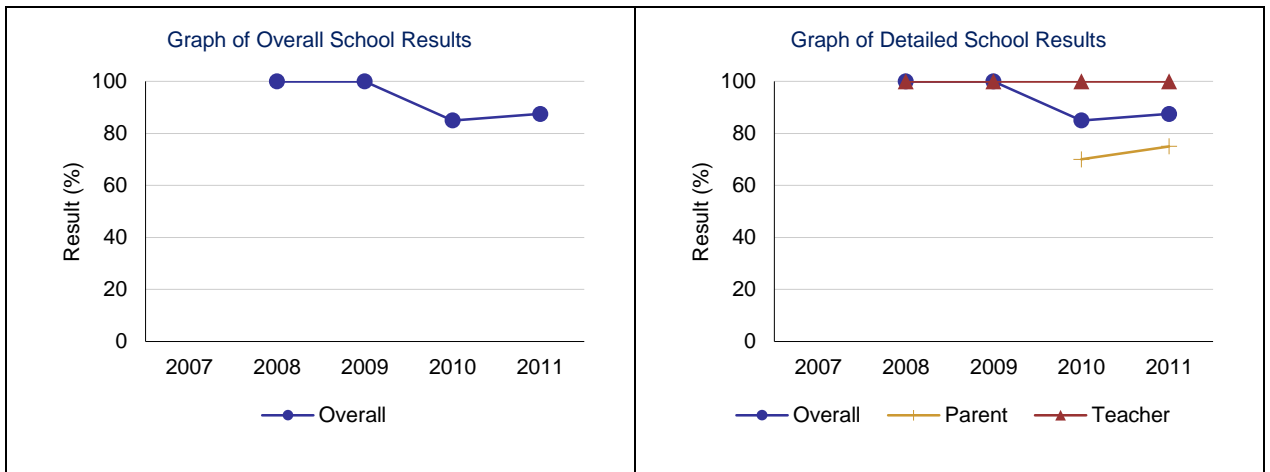
Citizenship – Measure Details



Note: Data values have been suppressed where the number of respondents is less than 6. Suppression is marked with an asterisk (*).

Work Preparation – Measure Details

Percentages of teachers and parents who agree that students are taught attitudes and behaviours that will make them successful at work when they finish school.															
	School					Authority					Province				
	2007	2008	2009	2010	2011	2007	2008	2009	2010	2011	2007	2008	2009	2010	2011
Overall	n/a	100.0	100.0	85.0	87.5	77.7	83.3	81.0	79.5	82.1	77.1	80.1	79.6	79.9	80.1
Teacher	n/a	100.0	100.0	100.0	100.0	92.3	91.8	91.3	93.8	93.7	89.2	89.3	88.9	90.0	89.6
Parent	*	*	*	70.0	75.0	63.0	74.8	70.7	65.2	70.6	65.1	70.9	70.2	69.8	70.6

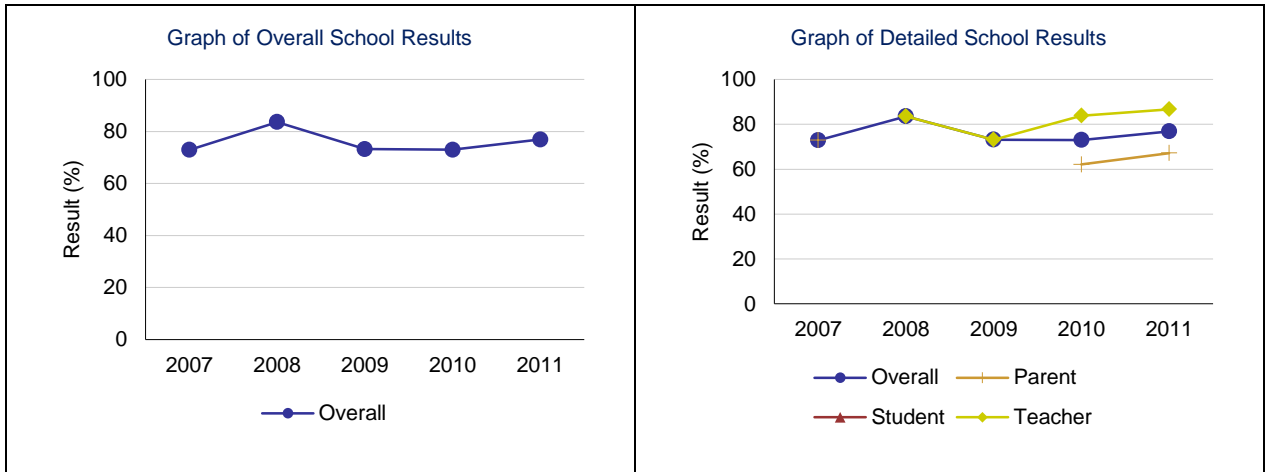


Note: Data values have been suppressed where the number of respondents is less than 6. Suppression is marked with an asterisk (*).

Program of Studies – Measure Details

Percentage of teachers, parents and students satisfied with the opportunity for students to receive a broad program of studies including fine arts, career, technology, and health and physical education.

	School					Authority					Province				
	2007	2008	2009	2010	2011	2007	2008	2009	2010	2011	2007	2008	2009	2010	2011
Overall	72.9	83.6	73.2	73.0	76.9	72.9	76.6	77.3	73.4	76.1	78.5	79.4	80.3	80.5	80.9
Teacher	n/a	83.6	73.2	83.9	86.7	80.9	86.3	85.8	83.1	85.5	85.7	86.4	86.8	87.7	87.6
Parent	72.9	*	*	62.1	67.2	70.5	73.1	73.0	69.2	71.4	76.9	77.6	78.7	78.0	78.3
Student	n/a	n/a	n/a	n/a	n/a	67.2	70.4	73.1	68.0	71.6	72.9	74.1	75.3	75.9	76.9

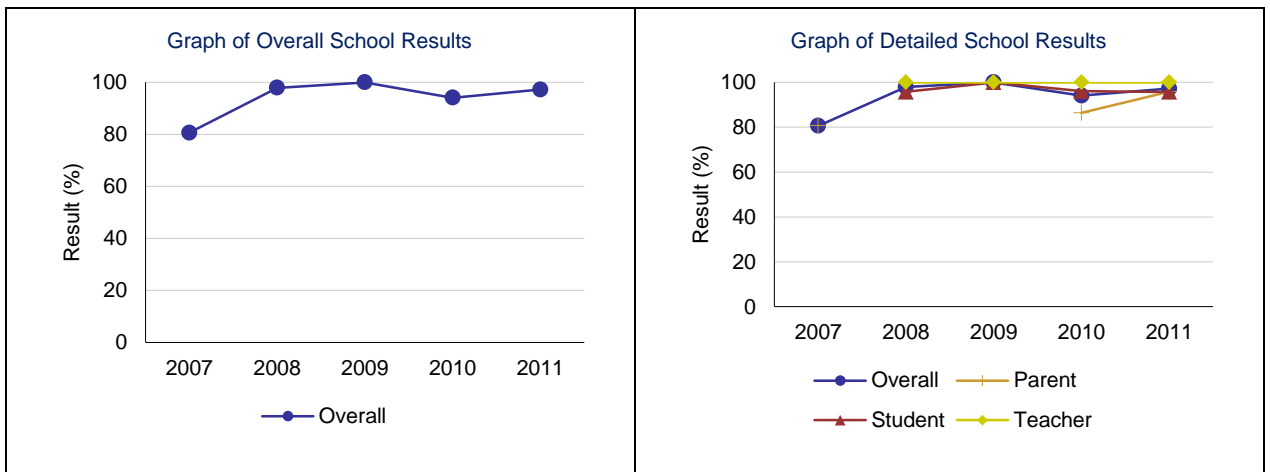


Note: Data values have been suppressed where the number of respondents is less than 6. Suppression is marked with an asterisk (*).

Education Quality – Measure Details

Percentage of teachers, parents and students satisfied with the overall quality of basic education.

	School					Authority					Province				
	2007	2008	2009	2010	2011	2007	2008	2009	2010	2011	2007	2008	2009	2010	2011
Overall	80.6	97.9	100.0	94.1	97.2	86.0	89.0	88.6	87.8	88.8	87.6	88.2	89.3	89.2	89.4
Teacher	n/a	100.0	100.0	100.0	100.0	94.7	96.2	95.3	96.9	98.2	94.7	94.9	95.3	95.6	95.5
Parent	80.6	*	*	86.4	95.8	78.4	84.4	82.9	79.3	81.4	81.8	83.0	84.4	83.9	84.2
Student	n/a	95.8	100.0	96.1	95.7	85.0	86.4	87.6	87.0	86.7	86.4	86.6	88.3	88.2	88.5

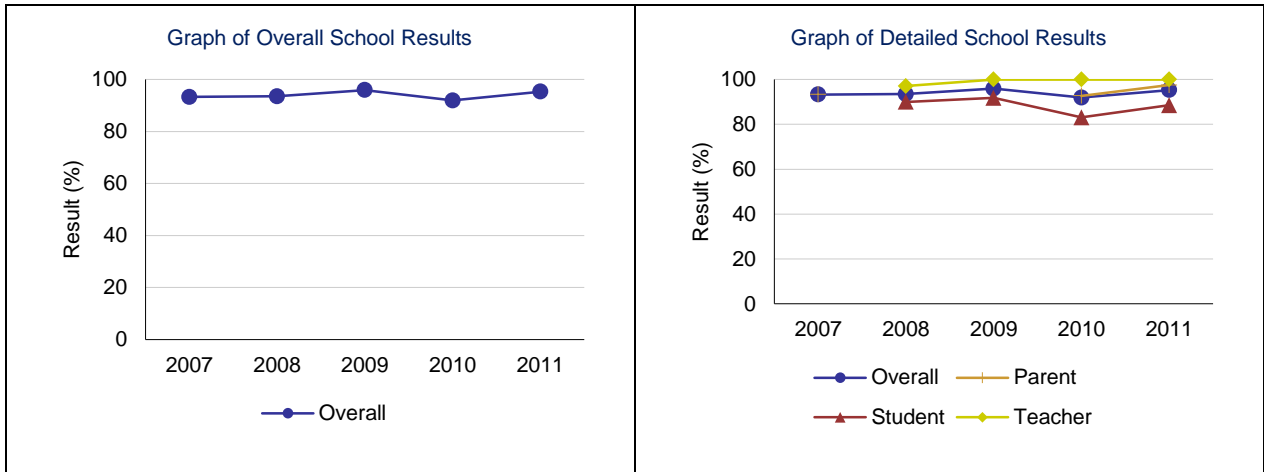


Note: Data values have been suppressed where the number of respondents is less than 6. Suppression is marked with an asterisk (*).

Safe and Caring – Measure Details

Percentage of teacher, parent and student agreement that: students are safe at school, are learning the importance of caring for others, are learning respect for others and are treated fairly in school.

	School					Authority					Province				
	2007	2008	2009	2010	2011	2007	2008	2009	2010	2011	2007	2008	2009	2010	2011
Overall	93.3	93.5	95.9	91.9	95.3	84.3	85.9	87.4	87.5	88.7	84.2	85.1	86.9	87.6	88.1
Teacher	n/a	97.1	100.0	100.0	100.0	93.0	95.2	95.8	95.4	97.4	92.6	93.1	93.8	94.4	94.5
Parent	93.3	*	*	92.7	97.5	81.7	83.7	85.7	85.2	86.4	81.7	83.2	85.3	86.1	86.6
Student	n/a	90.0	91.8	83.1	88.5	78.1	78.7	80.8	82.0	82.4	78.5	79.1	81.7	82.2	83.3

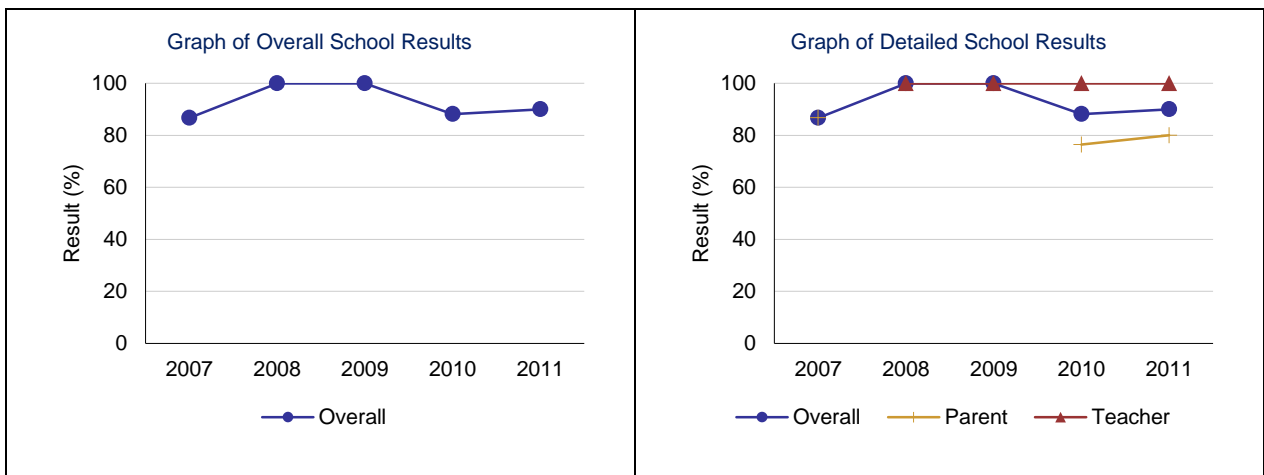


Note: Data values have been suppressed where the number of respondents is less than 6. Suppression is marked with an asterisk (*).

Parental Involvement – Measure Details

Percentage of teachers and parents satisfied with parental involvement in decisions about their child's education.

	School					Authority					Province				
	2007	2008	2009	2010	2011	2007	2008	2009	2010	2011	2007	2008	2009	2010	2011
Overall	86.7	100.0	100.0	88.2	90.0	75.6	78.3	79.4	77.2	77.9	77.5	78.2	80.1	80.0	79.9
Teacher	n/a	100.0	100.0	100.0	100.0	88.0	90.4	90.5	88.4	89.0	87.1	87.5	88.0	88.6	88.1
Parent	86.7	*	*	76.4	80.0	63.1	66.2	68.2	66.1	66.7	67.9	69.0	72.2	71.3	71.7

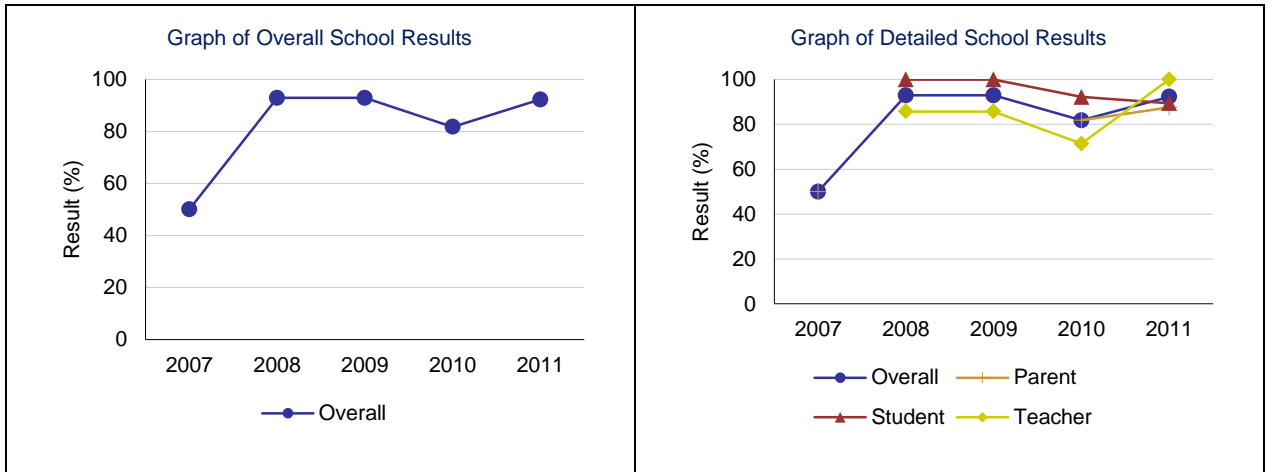


Note: Data values have been suppressed where the number of respondents is less than 6. Suppression is marked with an asterisk (*).

School Improvement – Measure Details

Percentages of teachers, parents and students indicating that their school and schools in their jurisdiction have improved or stayed the same the last three years.

	School					Authority					Province				
	2007	2008	2009	2010	2011	2007	2008	2009	2010	2011	2007	2008	2009	2010	2011
Overall	50.0	92.9	92.9	81.8	92.3	74.7	79.7	79.9	78.8	81.0	76.3	77.0	79.4	79.9	80.1
Teacher	n/a	85.7	85.7	71.4	100.0	78.0	84.7	83.4	85.3	86.1	74.5	75.6	78.2	80.8	80.1
Parent	50.0	*	*	81.8	87.5	70.4	76.5	76.6	71.7	75.8	75.1	75.9	78.1	77.0	77.3
Student	n/a	100.0	100.0	92.2	89.4	75.7	77.8	79.7	79.3	81.2	79.3	79.5	81.8	81.8	82.9

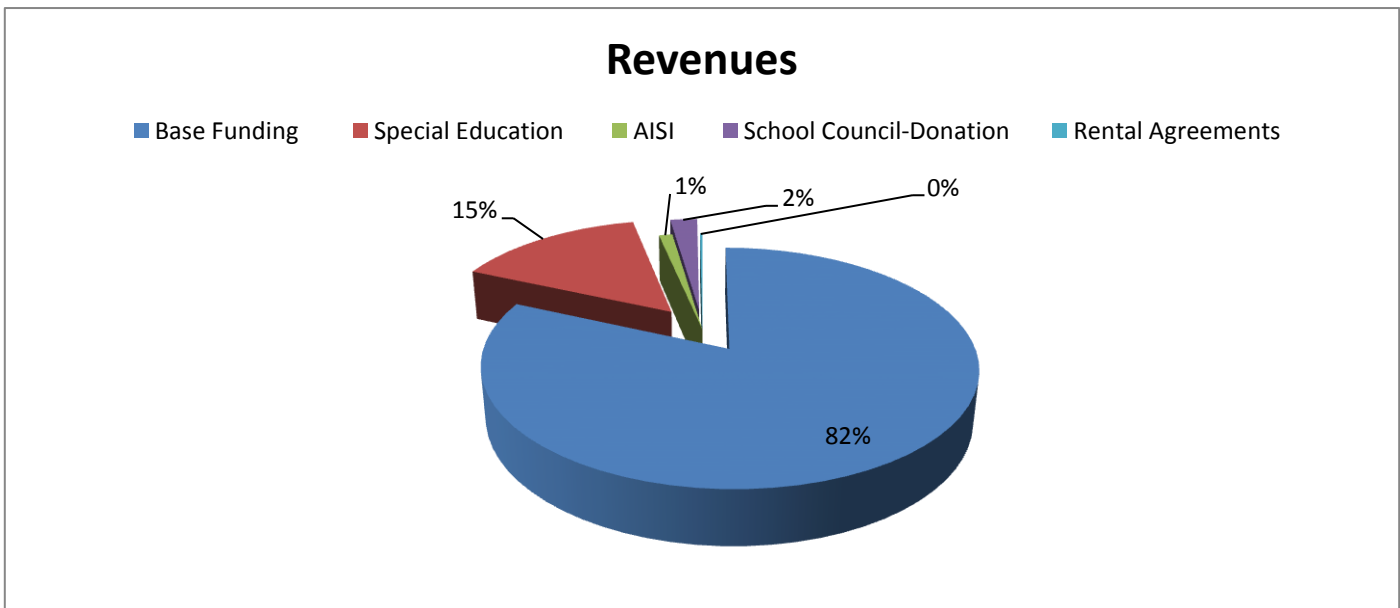


Note: Data values have been suppressed where the number of respondents is less than 6. Suppression is marked with an asterisk (*).

Budget Summary

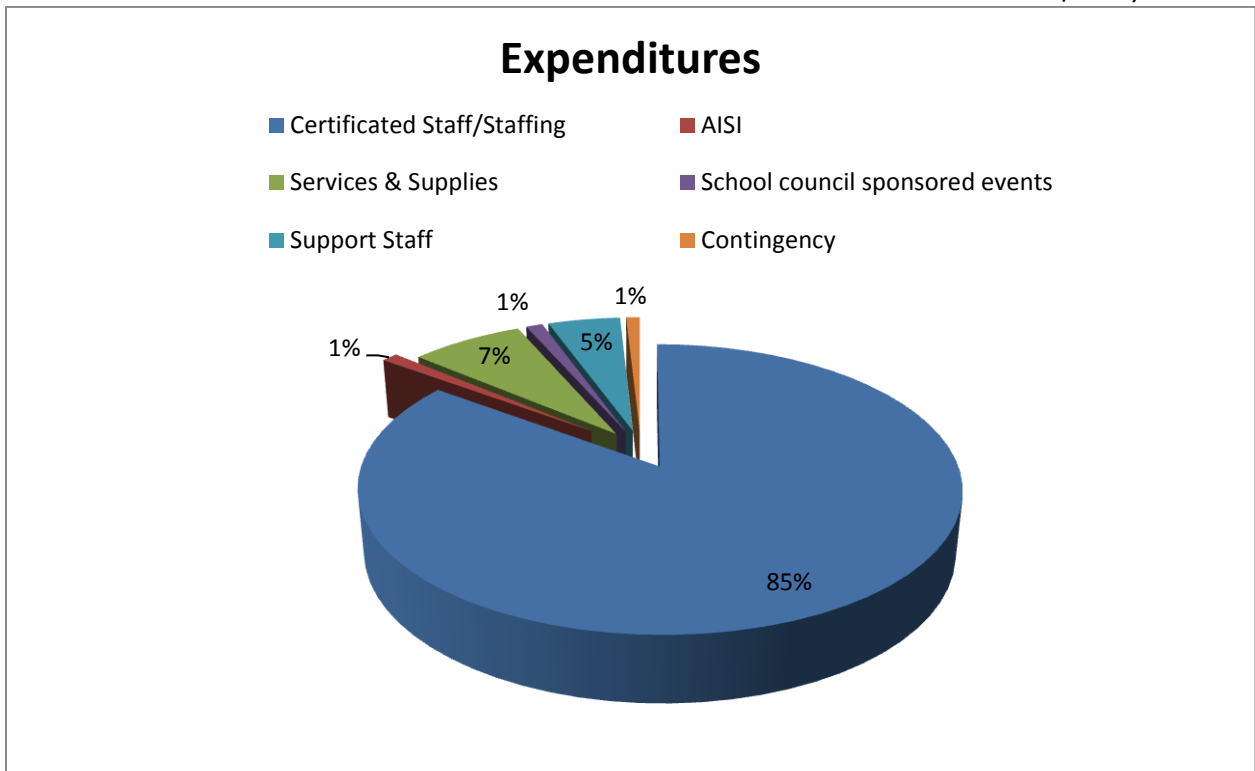
Revenue Projection 2010-2011

Base Funding	\$649,850.00
Special Education	\$119,284.00
AISI	\$8,300.00
School Council-Donation	\$17,000.00
Rental Agreements	\$1,500.00
	\$795,934.00



Expenditures

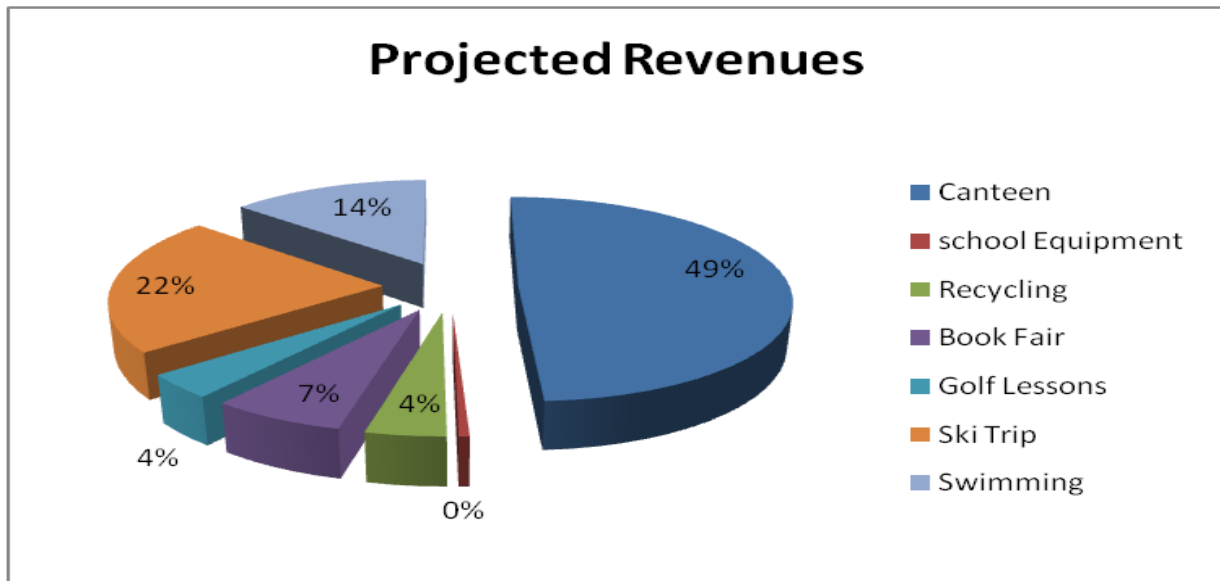
Certificated Staff/Staffing	\$677,128.00
AISI	\$8,300.00
Services & Supplies	\$57,940.00
School council sponsored events	\$8,500.00
Support Staff	\$37,066.00
Contingency	\$7,000.00
	\$795,934.00



School generated Funds

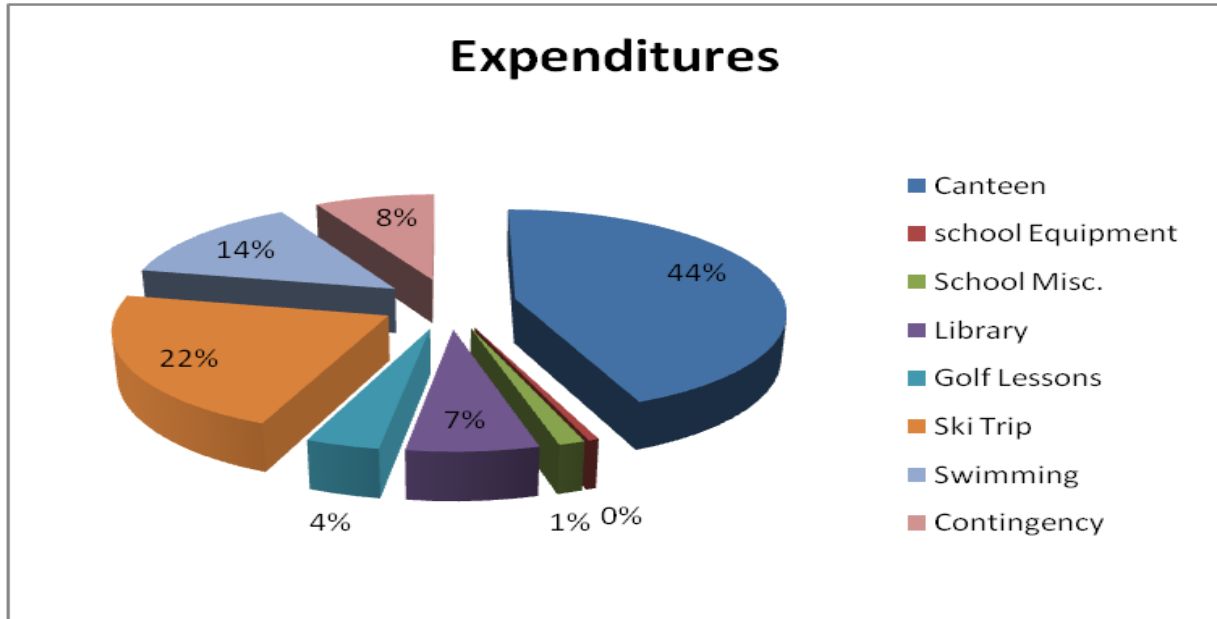
Projected Revenues

Canteen	\$9,000.00
school Equipment	\$100.00
Recycling	\$750.00
Book Fair	\$1,250.00
Golf Lessons	\$700.00
Ski Trip	\$4,000.00
Swimming	\$2,500.00
	\$18,300.00



Expenditures

Canteen	\$8,000.00
school Equipment	\$100.00
School Misc.	\$250.00
Library	\$1,250.00
Golf Lessons	\$700.00
Ski Trip	\$4,000.00
Swimming	\$2,500.00
Contingency	\$1,500.00
	\$18,300.00



Facility and Capital

Carseland School has had:

- New glass installed in the skylight canteen area.
- New paint in the main office, on the front sign, and back doors
- New carpet to be installed this year .

